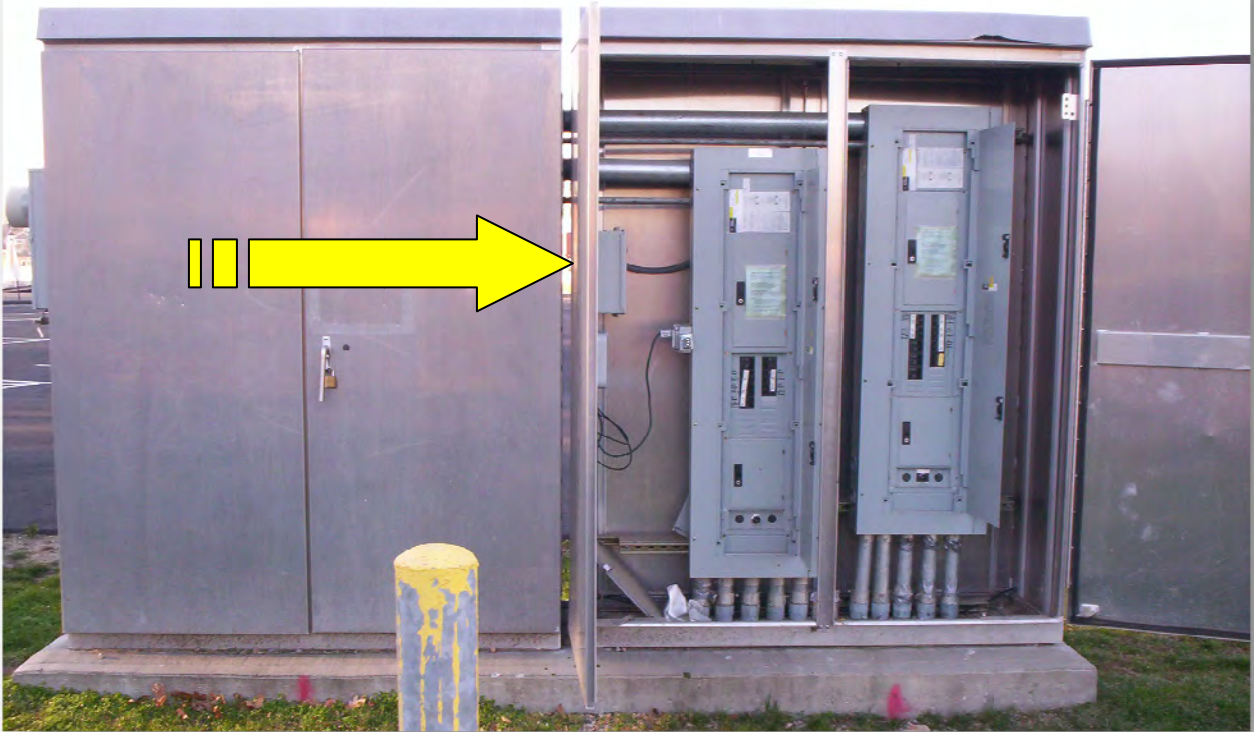
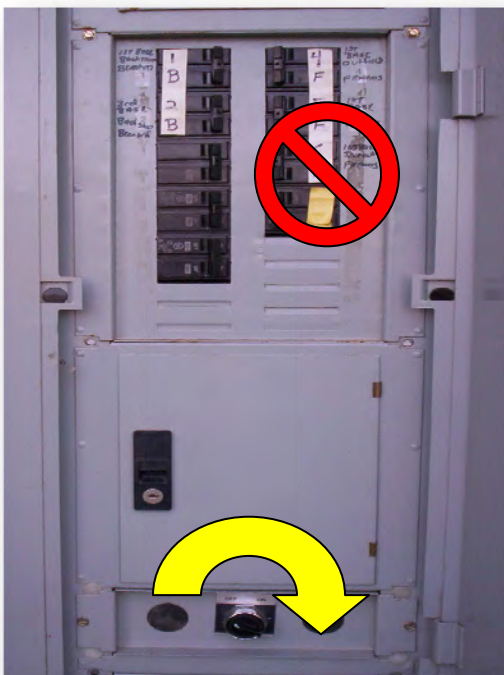


FIELD LIGHTING FOR FRANCIS & BENARD

The lighting panel for both fields is located behind the 3rd base side dugout at Benard Field.



Start by opening the right side. The combination for the lock is 1911. Once the doors are opened, you will see two sets of circuit breakers. Both sets should be turned on and left on. The black knob at the bottom of each panel is the **ONLY** thing that is turned on or off. Turn the knob clockwise to turn on and counter clockwise to turn off. Please make sure the lights are off and the panel doors are locked before leaving the field.



If the lights do not come on, check the meter outside the left side of the cabinet to see if the main power is on. If it is, you can open the left side doors to check if the main circuit breaker is on. If you don't feel comfortable turning this breaker on, call someone who can assist you.

